

MEMBERSHIP

To join our leading and impactful global community of academics, practitioners and policy makers and to help us support regional research and researchers globally, please go to <https://members.regionalstudies.org/lounge>

Our membership fees are based on five different categories and on the country in which you reside. The membership categories are:

INDIVIDUAL MEMBERSHIP if you are interested in regional studies/regional science and you are not a full-time student, early career researcher, a corporate representative or retired from full-time work

2026 A £136/£152** B £96*/£107** C £66*/£73* D £33*/£36**

EARLY CAREER MEMBERSHIP within 5 years of the date of your PhD certificate

2026 A £102*/£113** B £73*/£82** C £50*/£56* D £27*/£30**

STUDENT MEMBERSHIP if you are studying full-time

2026 A £62/£70** B £46*/£51** C £33*/£36** D £19*/£17**

CORPORATE MEMBERSHIP for organisations involved in regional development, research and policy e.g. university departments, institutes, managing authorities, consultancies

2026 A £291*/£327** B £235*/£211* C £145*/£160** D £77*/£85**

RETIRED/EMERITUS MEMBERSHIP if you are retired from full-time work

2026 A £102*/£113** B £73*/£82** C £50*/£56* D £27*/£30**


A,B,C,D = 2026 Territorial Pricing Bands (see lists opposite)

* Renewal membership rate for existing members

** Membership rate for new/ expired members

OUR LEADERSHIP

 **Professor Heike Mayer**
RSA President
University of Bern, Switzerland

 **Professor Sarah Ayres**
RSA Chair
University of Bristol, UK

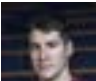
 **Dr Mia Gray**
Vice Chair, Comms and Public Engagement, Secretary
University of Cambridge, UK


 **Dr Stefania Fiorentino**
Regions Editor
University of Cambridge, UK


 **Professor Louise Kempton**
Chair of Policy Committee
Newcastle University, UK


 **Professor Ron Boschma**
Vice Chair (Research) and Chair, Research Committee
Utrecht University, Netherlands

 **Dr Grete Gansauer**
Trustee
University of Wyoming, USA

 **Professor Ignazio Cabras**
Treasurer
Newcastle Business School, UK

 **Professor Jennifer Clark**
Editor-in-Chief, Regional Studies
Ohio State University, USA

 **Dr Ida Musiałkowska**
Trustee
Poznań University of Economics, Poland

 **Dr John Harrison**
Conference and Events Coordinator
Loughborough University, UK

 **Dr Marcin Dąbrowski**
Chair, International Territorial Representatives Committee
Delft University of Technology, Netherlands

BAND A

Aotearoa New Zealand	Hong Kong	Norway
Australia	Iceland	Qatar
Austria	Ireland	Singapore
Belgium	Israel	Slovenia
Bermuda	Italy	Spain
Canada	Japan	Sweden
Denmark	Korea, Rep.	Switzerland
Finland	Luxembourg	United Arab Emirates
France	Macao	United Kingdom
Germany	The Netherlands	United States

BAND B

Bahamas	Greece	Slovak Republic
Bahrain	Hungary	Slovenia
Barbados	Kuwait	Spain
Brunei Darussalam	Latvia	Saudi Arabia
Curacao	Lithuania	Trinidad and Tobago
Cyprus	Malta	Turks and Caicos Islands
Czech Republic	Poland	Uruguay
Estonia	Portugal	Venezuela

BAND C


Argentina	Grenada	Russian Federation
Bulgaria	Kazakhstan	Serbia
Chile	Malaysia	Seychelles
China	Mauritius	St. Lucia
Costa Rica	Mexico	Taiwan
Croatia	Oman	Thailand
Cuba	Panama	Turkey
Dominica	Romania	Turkmenistan
Equatorial Guinea		

BAND D

Afghanistan	Georgia	Niger
Albania	Ghana	Nigeria
Algeria	Guatemala	North Macedonia
Angola	Guyana	Pakistan
Armenia	Honduras	Paraguay
Azerbaijan	India	Peru
Bangladesh	Indonesia	Philippines
Belarus	Iran, Islamic Rep.	Rwanda
Belize	Iraq	Senegal
Benin	Jamaica	Sierra Leone
Bhutan	Jordan	Solomon Islands
Bolivia	Kenya	Somalia
Bosnia & Herzegovina	Kosovo	South Africa
Botswana	Kyrgyz Republic	South Sudan
Brazil	Lebanon	Sri Lanka
Burkina Faso	Liberia	Sudan
Burundi	Libya	Syrian Arab Republic
Cambodia	Madagascar	Tajikistan
Cameroon	Malawi	Tanzania
Chad	Mali	Togo
Colombia	Mauritania	Tunisia
Cote d'Ivoire	Moldova	Uganda
Ecuador	Mongolia	Ukraine
Egypt	Morocco	Uzbekistan
El Salvador	Mozambique	Vietnam
Eritrea	Myanmar	West Bank and Gaza
Ethiopia	Namibia	Yemen
Fiji	Nepal	Zambia
Gabon	Nicaragua	Zimbabwe

RSA Regional Studies Association

A leading & impactful community

 facebook.com/regionalstudiesassociation
linkedin.com/in/regionalstudiesassociation
bsky.app/profile/regstud.bsky.social
RSACHandADP

WWW.REGIONALSTUDIES.ORG

Tel + 44 (0) 1273 698 017
Email office@regionalstudies.org

Regional Studies Association
Sussex Innovation Centre, Falmer, Brighton, BN1 9SB, UK

Reg. Charity No. 1084165 Reg. in England and Wales Company No. 4116288
VAT No. 393 7705 16
* Simmons, M. (2015) The No. 1 Predictor Of Career Success According To Network Science. The Mission. Available from <http://bit.ly/2IOvdcB>

RSA Regional Studies Association

The global forum for city and regional research, development and policy



A GREAT PREDICTOR OF CAREER SUCCESS IS MEMBERSHIP OF AN OPEN NETWORK
WE BUILD RESEARCH NETWORKS FOR YOU AND WITH YOU



WE FUND RESEARCH

£1 086 000

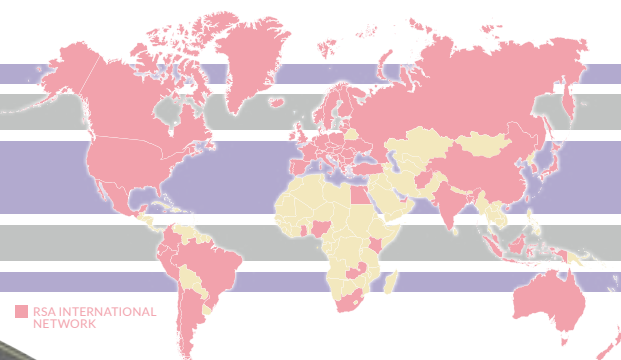
INVESTED IN MEMBERS' RESEARCH

50 FUNDED EARLY CAREER RESEARCH PROJECTS

71 RESEARCH NETWORK GRANTS AWARDED

WE ARE YOUNG AT HEART

47% OF MEMBERS ARE STUDENTS OR EARLY CAREER



WE ARE INTERNATIONAL

MEMBERS IN 85 COUNTRIES



INTERNATIONAL NETWORKS

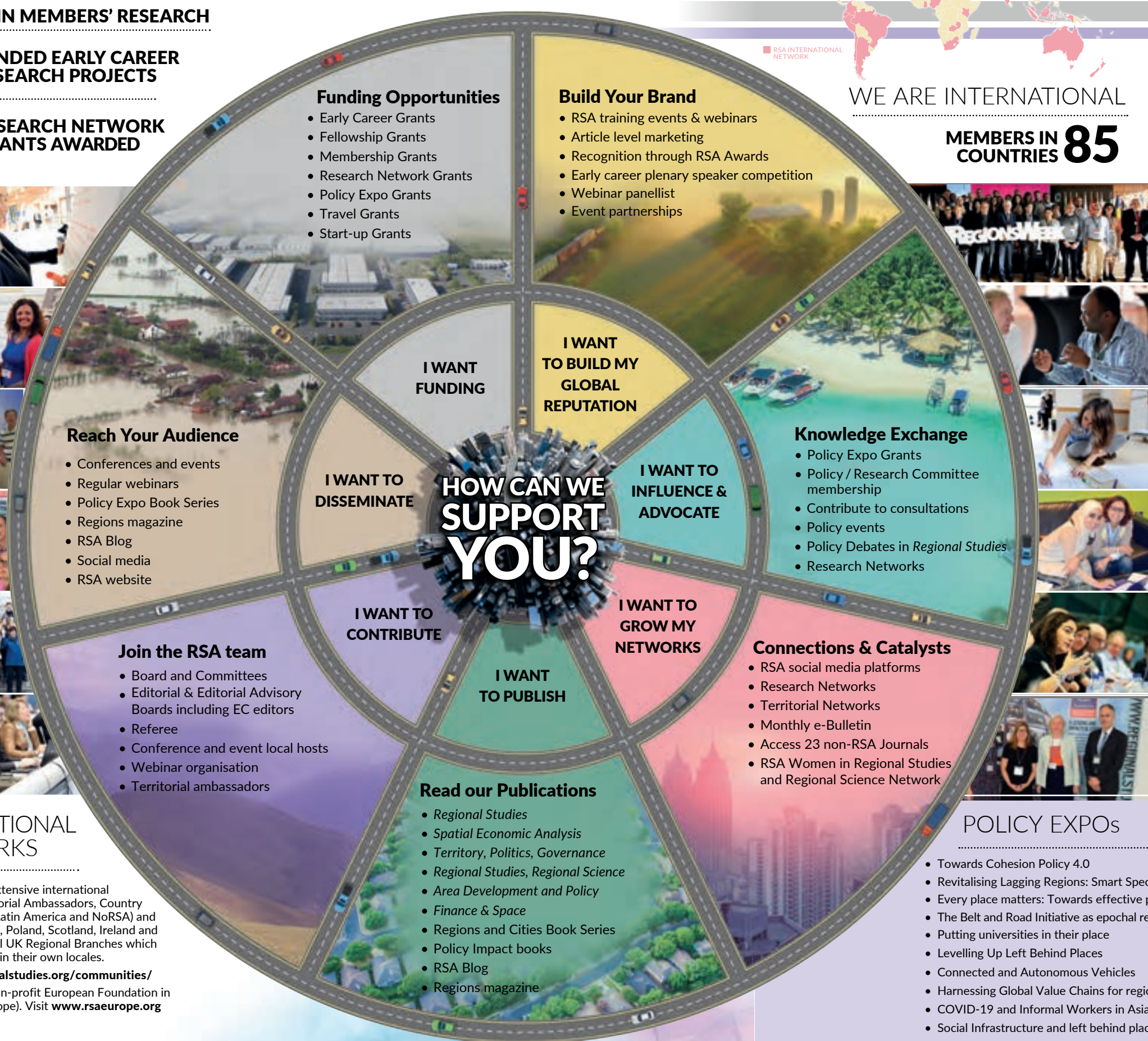
The RSA has an extensive international network of Territorial Ambassadors, Country Divisions (China, Latin America and NoRSA) and Sections (Hungary, Poland, Scotland, Ireland and Wales) and several UK Regional Branches which support members in their own locales.

Visit www.regionalstudies.org/communities/
We also have a non-profit European Foundation in Belgium (RSA Europe). Visit www.rsaeurope.org

20 BOARD MEMBERS

38 COMMITTEE MEMBERS

79 EDITORS



FORTHCOMING WEBINARS & EVENTS



Professional Development Webinar Series
Offering training and support for skills, knowledge and professional development.



Regions Cities Industry Webinar Series
Bringing experts in the field of regional studies, science and policy to you.



2026 RSA Annual Conference
Regions as Arenas in a Changing World
Gothenburg, Sweden
June 2026



2026 Student & Early Career Conference
Cardiff, UK
September 2026



2026 RSA Regional Futures Conference
London, UK
November 2026

For more info, visit www.regionalstudies.org/events-and-webinars/

POLICY EXPOS

- Towards Cohesion Policy 4.0
- Revitalising Lagging Regions: Smart Spec and Industry 4.0
- Every place matters: Towards effective place-based policy
- The Belt and Road Initiative as epochal regionalisation
- Putting universities in their place
- Levelling Up Left Behind Places
- Connected and Autonomous Vehicles
- Harnessing Global Value Chains for regional development
- COVID-19 and Informal Workers in Asian Cities
- Social Infrastructure and left behind places
- Going Circular: Unlocking the Potential of Regions and Cities to Drive the Circular Economy Transition
- A seat at the table: A place for disabled entrepreneurs and innovators

FUNDED RESEARCH NETWORKS

- Eco-Social Policy & Practice for Innovation & Transformation (ESPPRIT)
- Smart Policies for Reg. Innovation, Sustainability & Transitions (SPRINT)
- Transformative Regional Resilience (T2R)
- Transformative Knowledge Regions (TRAKR)
- Knowledge, Innovation and Regional Development (KIRDSA)
- Putting the 'Just' into Just Transitions for Cities & Regions
- Peripheries and Peripherality (EdgeNet)
- Infrastructural Regionalisms (NOIR)
- Financial Geographies (FinGeo)
- Municipalism and Regional Fiscal Geographies (MuniFisc)

For more details on Funding & Awards, visit regionalstudies.org/funding-awards/