

Publish without perishing

Alasdair Rae

University of Sheffield

@undertheraedar

Perish without publishing

Alasdair Rae

University of Sheffield

@undertheraedar

Short introduction, then I'm going to go through different kinds of publishing practices before finishing with my **worst rejections** and some top tips.

Plus brief tangent about citations, etc.

Who am I?

Who are any of us?

ajrae.staff.shef.ac.uk →



ABOUT

ACADEMIC

PROJECTS

RESOURCES

MEDIA

CONTACT

RSA

Former EC Rep

Former Treasurer

RSRS Editor/Founder

ALASDAIR RAE

UNIVERSITY OF SHEFFIELD, UK. A.J.RAE@SHEFFIELD.AC.UK

I research and write about neighbourhoods, cities, regions, and anything in between. newspaper pieces to blogs, tweets, TV, and even [animated gifs](#). If you want to see some of the Department of Urban Studies and Planning. I've put this page together in case you want the social media links below.



This is the place to be for the next 20 minutes

1. Journal articles
2. Book chapters
3. Books
4. Other stuff
 - a. Blogs
 - b. Twitter
 - c. News media
 - d. The Conversation etc
 - e. TV
5. What do you want out of this? (and what is 'this' anyway?)
6. My worst rejections (finish on a positive)
7. Some tips

The journals I have published in

Journal	Impact Factor
Regional Studies	3.14
PLOS ONE	2.82
Computers, Environment and Urban Systems	2.74
Nephron	2.21
Area	2.20
Applied Spatial Analysis and Policy	1.83
Environment and Planning A	1.77
Urban Studies	1.65
Environment and Planning B	1.53
Housing Studies	1.34
Cities	1.33
Planning Theory and Practice	0.87
Scottish Geographical Journal	0.78
Local Economy	0.65
Town Planning Review	0.61
Journal of European Real Estate Research	0.53



The journals I have been rejected from

Journal
Urban Studies

Regional Studies

Journal of Planning Literature

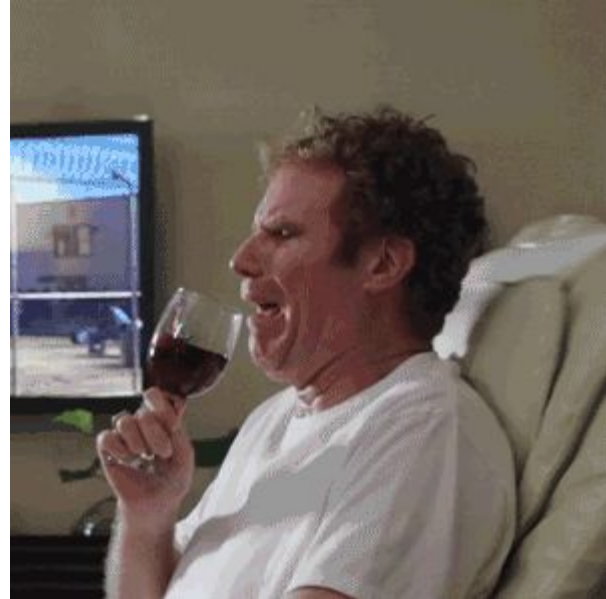
PLOS ONE

Habitat International

Journal of Planning Education and Research

Journal of Maps

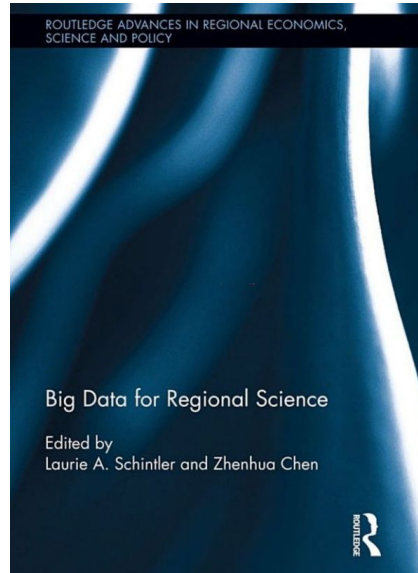
Research and Politics



Book chapters

I am not a massive fan but they can be quite useful

(remember to say why I think this)



16 From 'big data' to big regions

The geography of the American commute

Alasdair Rae and Garrett Dash Nelson

1 Introduction

Mapping the movement of people and goods has been a focus of scientific enquiry for well over a century (e.g., Ravenstein, 1885) and in an increasingly connected world it remains an important topic. Understanding how places connect, the nature of their interactions and their spatial configuration, has been studied by human geographers in particular, with seminal contributions from Kern and Ruston (1969), Tobler (1976, 1987) and Dorling (1991). More recently, Rae (2009, 2011) attempted to understand spatial structures of migration and commuting in a GIS context, and Ratti et al. (2010) explored billions of individual human interactions as an alternative way of delineating space in a visually compelling way for Great Britain.

This chapter builds upon previous work in the field of spatial interaction data analysis and geovisualization by exploring patterns of commuting in the United States using a large, highly detailed journey to work dataset produced by the 2006–2010 five-year American

Books

Easy to start, hard to finish

(kind of like a PhD)

The whiteboard is divided into three main sections, each with a title box and a publisher logo (SAGE or PALGRAVE).

- GIS & PLANNING - PALGRAVE -**
 - Revisions
 - Permissions
 - by end 2018 ☐
 - 9 chapters
 - Re-do lots of figures
 - 'Must include...' list
 - Switzerland example?
- Analysis & Planning SAGE**
 - AR - Yudhono, Smith, Wang, Nelson,
 - AR - Ch 4 spatial analysis & GIS for city planning + Ch 1 & 13 (w/cw)
 - Oct 17 - Cont authors
 - Aug 18 - draft chapters?
 - Dec 18 - revisions requested
 - Mar 19 - final drafts
 - Apr 19 - Submit MS
 - Approved 08/06/18
 - Books -
- Data in the media SAGE**
 - 1. Intro
 - 2. "Is that big?" ☑
 - 3. Where is data from? ☑
 - 4. Representativeness - polls/surveys ☑
 - 5. Graphics, how to read them ☑
 - 6. Maps in the media ☑
 - 7. Mapping patterns/people 12/16 ☑
 - 8. Uncertainty/probability
 - 9. Ranking/league tables ☑
 - 10. Causality/relationships ☑
 - 11. Statistical quirks ☑ (My hand belongs to the world)
 - 12. Conclusion
 - Search paper: Bridging the gap, GHSL data paper, Jobs in blobs
 - Anatomy: CombScotlands, AirBnB Ed, EU gridmap

Other stuff (blog)

This is what really excites me because

‘publishing’
isn’t just about
journal
articles.



Pageviews today	171
Pageviews yesterday	238
Pageviews last month	9,360
Pageviews all time history	303,954
Followers	2

[Manage tracking your own pageviews](#)

Posts

[More »](#)

Entry	Pageviews
The Most Densely Populated Squar... Jan 28, 2018	37738
The Global Human Settlement Laye... Oct 23, 2016	10553
Watching the ships go by Aug 2, 2018	8879
The 8 English Regions of a Federal... Dec 16, 2016	6524
Buildings of Great Britain Sep 19, 2017	5885

Traffic Sources

[More »](#)

Entry	Pageviews
http://m.facebook.com	25095
http://m.facebook.com/	24040
https://www.facebook.com/	5545

Audience

[More »](#)



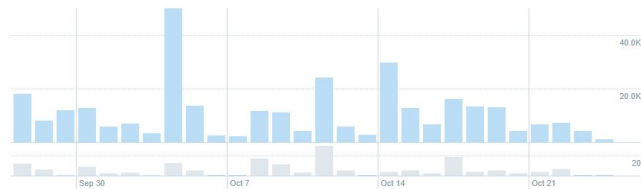
Twitter (not for everyone of course)

BEWARE!





Analytics Home Tweets Audiences Events More

Alasdair Rae Sign up for Twitter Ads

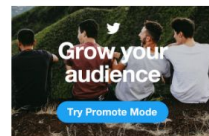
Your Tweets earned 319.0K impressions over this 28 day period



Tweets Top Tweets Tweets and replies Promoted Impressions Engagements Engagement rate

	Alasdair Rae @undertherae · Oct 4 On #ShetlandInABox I am in favour of a slightly different approach. Use the box, but add geographically accurate silhouette showing where it actually is - whether Shetland or anywhere else. This seems to me to be a good compromise / ... pic.twitter.com/UcM2a6u2LL View Tweet activity	34,780	2,396	6.9%	Promote
	Alasdair Rae @undertherae · Sep 27 Want your outline colour to match your fill colour in QGIS without doing it manually for each one? Set outline colour using the symbol_color expression (see video). I'm taking a leaf out of @cartocalypse book and posting this as one of growing number #qgistips on twitter #QGIS pic.twitter.com/AuYfIOLL View Tweet activity	23,478	756	3.2%	Promote
	Alasdair Rae @undertherae · Oct 18 I've put together a 'Resources' section on my web page, including all GB buildings, UK constituencies, IMD data + maps, and more (all open). If there's anything missing that I've forgotten about, feel free to suggest it - I may have already done it. ajrae.staff.shet.ac.uk/#resources pic.twitter.com/wKw3bgQik View Tweet activity	14,371	687	4.8%	Promote
	Alasdair Rae @undertherae · Oct 11 "New map of Scotland - as reimagined by an algorithm" (ti:dr 32 become 17, but human intervention necessary) piece by Ruth Hamilton and me, with link to paper: theconversation.com/new-map-of-sco... N.B. it's a conversation-starter not a proposal	13,880	1,198	8.6%	Promote

YOUR TWEETS
During this 28 day period, you earned 11.1K impressions per day



Engagements
Showing 28 days with daily frequency



On average, you earned 55 link clicks per day



On average, you earned 11 Retweets per day

Article

Urban Analytics and City Science

Government and Planning & Urban Analytics and City Science

10.1016/j.ub.2018.08.001

© The Author(s) 2018

Article reuse guidelines: [https://www.elsevier.com/locate/ub](#)

DOI: [10.1016/j.ub.2018.08.001](#)

2404-9880/2018/08/001

© SAGE

Regions from the ground up: a network partitioning approach to regional delineation

Ruth Hamilton and Alasdair Rae
University of Sheffield, UK

Abstract

In this paper, we consider the question of what is 'a' region, from an economic perspective, based on commuting data. This follows a long line of studies on labour market delineation, including the widely used 'travel-to-work area' approach. Using Combo, a network partitioning algorithm, we analyse commuting data from the 2011 UK Census in order to define a discrete set of regions. Our aim is twofold: to contribute to methodological advances in regional delineation, and to produce results that have real-world utility. Following the introduction, we review previous work, before describing our data and methods. Our approach produces 17 'new' regions for Scotland, in contrast to the existing set of 32. Our view is that algorithmic approaches to regional delineation have much to offer in a policy setting, but this must be tempered by the fact that regions, however defined, are inherently political constructs.

Keywords

Regional analysis, network structure, commuting, travel-to-work area, geographical information science

Introduction

The question of the scale and size of regions has historically been approached from several perspectives, with seminal contributions from Ohlin (1933), Lösch (1954) and Meyer (1963) amongst the most well-known. This is testament to the enduring importance of the topic and to periodic advances in methodological thinking on the subject. Regional delineation also retains a high degree of policy relevance, with recent regional reorganisations in France, Denmark and Poland suggesting there is a place for methodologically robust approaches to

Corresponding author:

Alasdair Rae, Department of Urban Studies and Planning, University of Sheffield, Sheffield S10 2TN, UK.
Email: a.j.rae@sheffield.ac.uk

The Conversation (or other bloggy stuff)

SAFE?

THE CONVERSATION
Academic rigour, journalistic flair

Arts + Culture Business + Economy **Cities** Education Environment + Energy Health + Medicine Politics + Society Science + Technology Brexit

New map of Scotland – as reimagined by an algorithm
October 11, 2018 12:06pm BST

There are certain things a wise politician would never tinker with: big issues such as [council tax reform](#), which are placed in the “too difficult” box and remain unresolved for decades. Another such item is the redrawing of local government boundaries.

Authors
Alasdair Rae
Professor in Urban of Sheffield

“However, we should emphasise that these are not proposals for new council areas.”

News media

AH, RIGHT!

T **The Times Scotland** @thetimesscot · Oct 17
Scotland has too many **councils** and almost half of them should be scrapped to save money, a @sheffielduni report has suggested



Scrapping half of councils 'will save cash and boost efficiency'

Scotland has too many councils and almost half of them should be scrapped to save money, a report has suggested. The number of local authorities ...

thetimes.co.uk

42 9 5

Daily Record NEWS · POLITICS · FOOTBALL · SPORT · TV & CELEBS · LIFE & STYLE · SCOTLAND NOW · IN YOUR AREA · BUSINESS · TRAVEL

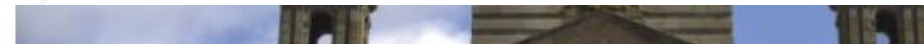
News · Local News · Perthshire

Call for creation of 'super council'

Perth and Kinross, Dundee and Angus councils would combine

SHARE      17 SHARES

By **Perthshire Advertiser**
11:17, 19 OCT 2018



Greater Glasgow would become the largest local authority in Britain if a study's proposal is adopted
JONATHAN NICHOLSON/GETTY IMAGES

TV - what's the worst that could happen?

HATE MAIL



No matter what, it's soon forgotten about.



Donald B Rubin

John L. Loeb Professor of Statistics, [Harvard University](#)
Verified email at stat.harvard.edu

[Statistics](#) [Economics](#) [Psychology](#) [Biostatistics](#) [Epidemiology](#)

[FOLLOW](#)

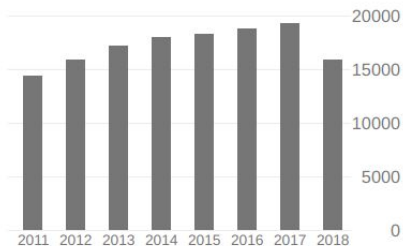
[GET MY OWN PROFILE](#)

TITLE	CITED BY	YEAR
Maximum likelihood from incomplete data via the EM algorithm AP Dempster, NM Laird, DB Rubin Journal of the royal statistical society. Series B (methodological), 1-38	55146	1977
Statistical analysis with missing data RJA Little, DB Rubin John Wiley & Sons	24560	2014
Bayesian data analysis A Gelman, J Carlin, H Stern, DB Rubin CRC press	22441 *	2004
The central role of the propensity score in observational studies for causal effects PR Rosenbaum, DB Rubin Biometrika 70 (1), 41-55	21072	1983
Multiple imputation for nonresponse in surveys DB Rubin John Wiley & Sons	16691	2004
Inference from iterative simulation using multiple sequences A Gelman, DB Rubin Statistical science 7 (4), 457-472	9338	1992

Cited by

[VIEW ALL](#)

	All	Since 2013
Citations	252758	107922
h-index	123	88
i10-index	353	256





Sally Hardy

Professor of Mental Health and Practice Innovation, [London South Bank University](#)
Verified email at [lsbu.ac.uk](#)

[Mental Health Nursing](#) [Practice Based Innovation](#) [Public Mental Health](#)

[FOLLOW](#)

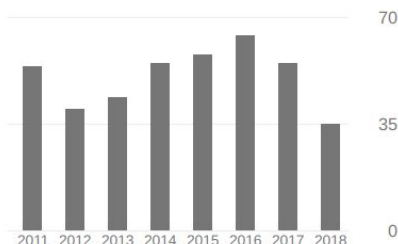
[GET MY OWN PROFILE](#)

TITLE	CITED BY	YEAR
An exploration of intent for narrative methods of inquiry S Hardy, S Gregory, J Ramjeet Nurse Researcher (through 2013) 16 (4), 7	71	2009
Exploring nursing expertise: nurses talk nursing S Hardy, R Garbett, A Titchen, K Manley Nursing Inquiry 9 (3), 196-202	70	2002
Changing patients' worlds through nursing practice expertise. Exploring nursing practice expertise through emancipatory action research and fourth generation evaluation K Manley, SE Hardy, A Titchen, R Garbett, B McCormack Royal College of Nursing, London	59	2005
Work-based learning in the context of contemporary health care education and practice: A concept analysis K Manley, A Titchen, S Hardy Practice Development in Health Care 8 (2), 87-127	52	2009
Mental and physical health comorbidity: Political imperatives and practice implications S Hardy, B Thomas International Journal of Mental Health Nursing 21 (3), 289-298	39	2012

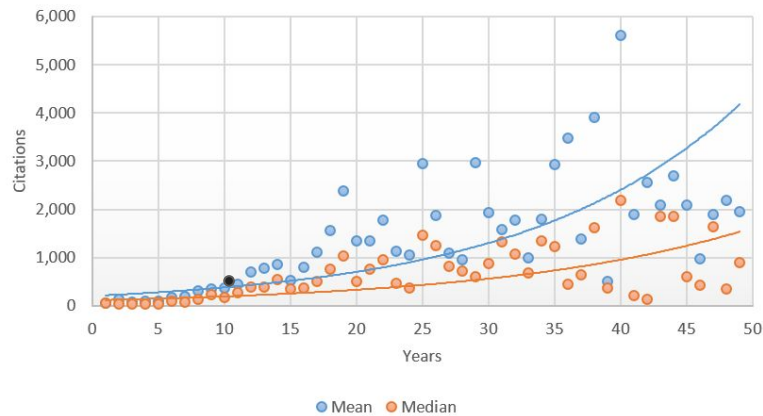
Cited by

[VIEW ALL](#)

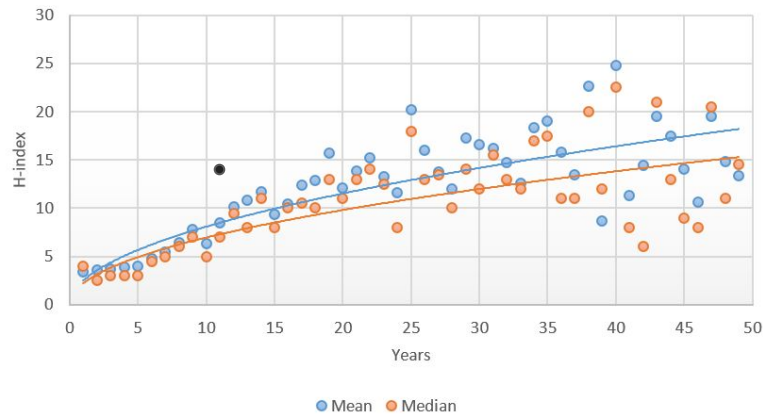
	All	Since 2013
Citations	592	311
h-index	13	10
i10-index	14	10



Citations by Years Since PhD



H-Index by Years Since PhD



“When this question has been asked in the past, the answer typically is that your h score is good if it is equal to or greater than the number of years since finishing your PhD. That varies based on your departmental expectations, etc.”

What do you want out of 'this'?

A nice life?

A happy life?

Lots of citations?

Lots of friends?

No friends?

Lots of papers?

To make a difference?

Everything?



My worst rejections - some quotes

Reviewer 1: “The manuscript is not well written. The paper contains numerous inconsistent statements and internal contradictions. At many points it is not clear just what the author is attempting to say.

Given this, my recommendation is to reject the manuscript and to not encourage resubmission.”

Reviewer 2: “Yes it is extremely well written-there is a logic to it and a clear and well argued narrative”

My worst rejections - some quotes

“This is just a bunch of visualizations of an open source data that does not go beyond doing some fancy looking maps and displaying things we already know.”

(why, say what you really think)

My worst rejections - some quotes

“I think the experience is therefore best documented in a blog post on the data blog rather than academic journal.”

My worst rejections - some quotes

“As it stands the data presented does not really add a lot to academic debates and any potential policy implications are not really articulated. The conclusion is limited and does not really develop or advance wider debates. For these reasons I am unfortunately recommending rejection.”

My top tips

- Think ahead (this is a really boring and obvious tip, sorry)
- Rejected? Take a day to mope around and then move on
- Read tales of failure and success - the two are close partners
- Some rejections are 'I don't like your clothes' and some are 'you stink' so be honest with yourself and try to tell the difference
- Choose good journals - but what is good?
- Make the most of your writing (but I don't mean salami slicing)
- Don't think publishing = journal papers only
- Don't think you're not good enough - we're all imposters at some point
- Choose the right journal
- Accept that it takes time